

### Laminar Air Flow Cabinet Vertical

Laminar Flow principle involves double filtration of air. Atmospheric air is drawn through pre-filter and is made to pass through highly effective HEPA (High Efficiency particulate Air - deep pleat) filter having efficiency rating as high as 99.99% with cold DOP and 99.97% with hot DOP with the help of 1/5HP motor-1440Rpm ] in vertical way. Thus retaining all airborne particles of size 0.3 micron and larger. Double filtered air blows in laminar flow to the worktable at designed velocity of 90 ft/min +/-20%. Noise level Less than 65 db at work area, and Vibration-0.00005 cm of work table. The instrument is made of good quality plywood with exterior Poly Urethane coated finish & work table is S.S 304 grade.



Model No.	Size of HEPA Filter	Outer dimension W x D x H
KLFV-1SS	2' x 2'	28" x 28" x 80"
KLFV-2SS	3' x 2'	40" x 28" x 80"
KLFV-3SS	4' x 2'	52" x 28" x 80"
KLFV-4SS	6' x 2'	76" x 28" x 80"

Cabinet with MS sheet fabrication duly powder coated can be supplied on request.  
 b) Cabinet with SS body can be supplied on request.

c) ULPA Filter can be supplied on specific order  
 d) HEPA system in a particular area or room can be done against specific order  
 e) Dwyer magnetic gauge can be fitted instead of Inclined Manometer  
 1) Glass Bead Sterilizer 2' dia, 4' depth can be supplied  
 Infra red activated sterilizer can be supplied

Made with heavy gauge MS tubular pipe with thick gauge MS frame duly powder coated or Tubular Aluminium Pipe with Aluminium frame having rack size of 48" X 21". Height between each rack is 15". Each rack is fitted with two Nos. of fluorescent tube and one U.V Germicidal tube. Each tube has separate ON/OFF switch. 0-24 hours weekly cyclic timer also equipped with the unit for controlling all the U.V tubes inside the racks. Complete with 15-Amps cord-wire plug to work on 230 VAC.

Model No.	Body	No. of racks
KTCR-M2	Mild Steel	2
KTCR-M3	Mild Steel	3
KTCR-M4	Mild Steel	4
KTCR-A2	Aluminium	2
KTCR-A3	Aluminium	3
KTCR-A4	Aluminium	4

#### OPTIONAL

Tissue Culture Rack made of fully SS can be supplied

### Tissue Culture Rack



**Biological Safety Cabinets** [Class II] an integral factory assembled system, permitting total disinfection. These are designed to use simultaneous primary biological and chemical containment. The recirculation of cabinet air through a second HEPA Filter [High Efficiency Particulate Air- Mini Pleat type] offers a highest level of cleanliness. Air is drawn through pre-filter and is made to pass through HEPA Filter having efficiency to purifying all airborne particles of size 0.3 micron and larger. Using a dynamic balanced motor with blower assembly system [1/5HP-1440 RPM] operates with minimum noise level and the contaminated air is going through the exhaust duct [1/4-HP motor-2880 RPM] fitted on the back bottom of the unit. The basic unit made of good quality Plywood with Poly Urethane Coating which includes standard accessories like static pressure manometer, HEPA Filters for cabinet [Mini pleat type] Pre-filters, one UV light for the work area, one coak for gas. It is suitable for handling medium to low risk organisms encountered in Research, Investigation, Labs in all branches of Medical, Agriculture, and Pharmaceutical Sciences. The equipment is built with an exhaust system on the top of the unit having 4" dia PVC duct for the provision of connecting the pipe. In addition to normal features of Vertical Laminar Flow class II, it is provided with following unique features.



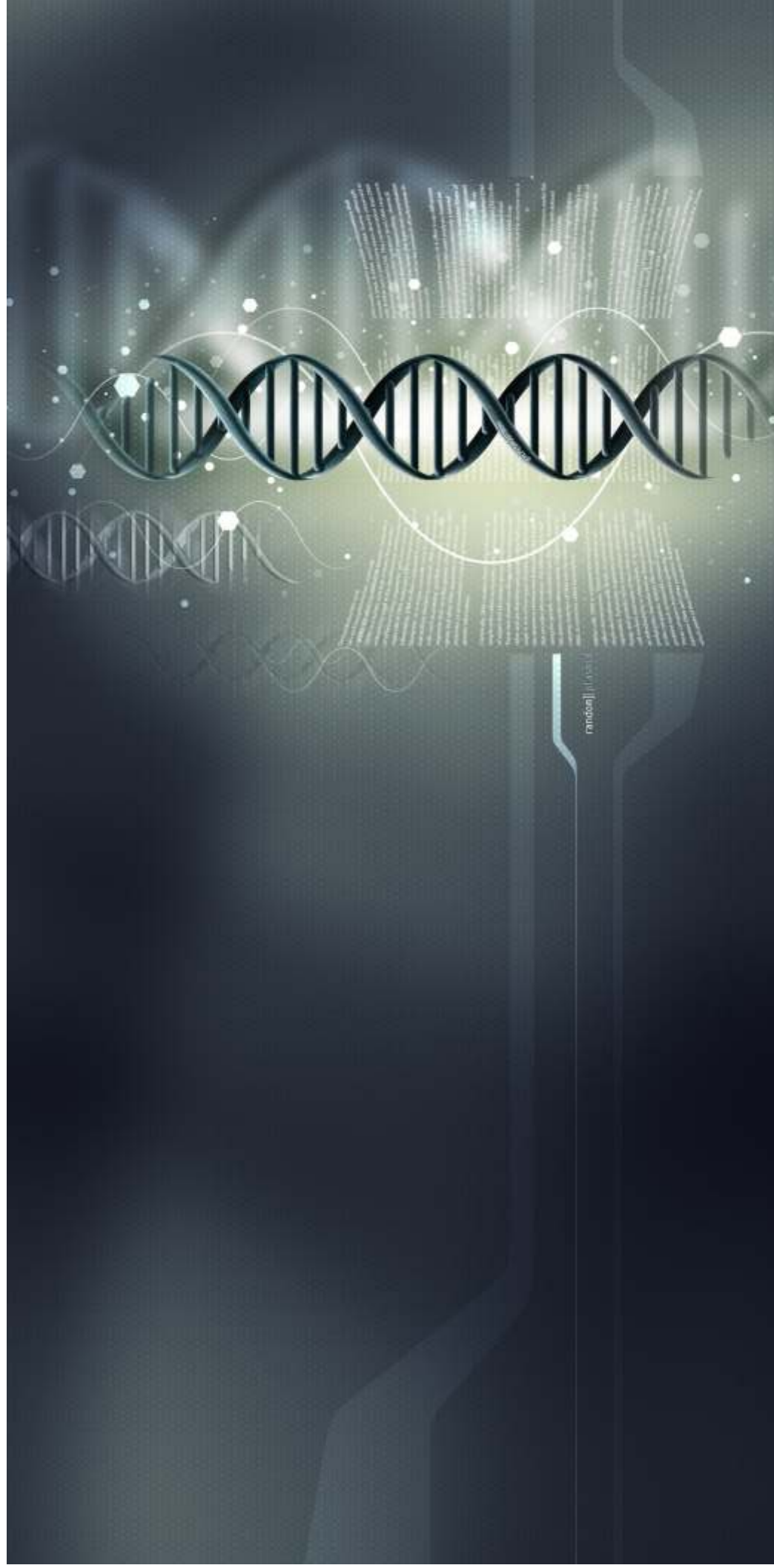
- a) Front door provided with UV stabilised polycarbonate sheet in foldable manner.
- b) **Filtered Exhaust:** Protects ambient environment, avoids build up, heat, fumes and odour.
- c) **Supplementary Air Barrier:** Prevents of contamination through make up air.
- d) **Built in U.V germicidal light:** facilitates sterilization of working area before and after use, U.V Tube (Phillips).
- e) Cleanliness 'CLASS II' with an efficiency of 99.99%

Model No.	Size of Work Table SS Top	Outer Dimension
KBSC-1	2' x 2' x 2'	29" x 36" x 76"
KBSC-2	3' x 2' x 2'	41" x 36" x 76"
KBSC-3	4' x 2' x 2'	53" x 36" x 76"
KBSC-4	5' x 2' x 2'	65" x 36" x 76"
KBSC-5	6' x 2' x 2'	77" x 36" x 76"

#### OPTIONAL

**NB:** In accordance to its safety performance necessities and stipulations, the Bio Safety Cabinet (Class II) can be constructed in the following types  
 Type A - 70% air (approx) re circulating & 30% exhausting  
 Type B1- 30% air (approx) re circulating & 70% exhausting  
 Type B2- 100% exhausting and no re circulation  
 Bio Safety cabinet (Class I) can be supplied

- a) Virus burn-out chamber
- b) Dwyer magnetic gauge
- c) Glass Bead Sterilizer 2' dia, 4' depth
- d) Infra red activated sterilizer can be supplied
- e) For Type B-2, Carbon HEPA Filter (for filtering air prior to discharge the outside area)

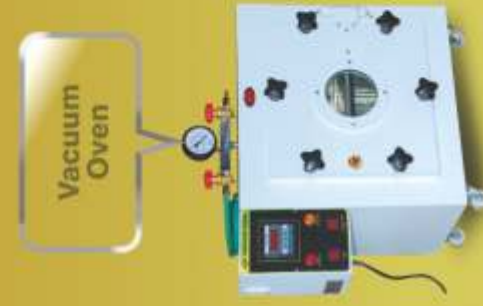


1<sup>ST</sup> FLOOR, KALLIDUKKIL COMPLEX, PERILLY  
 OMASSERY, CALICUT, KERALA, PIN: 673582  
 PH : 9745 030 642 | 9947 969 123



# PAGE INDEX

Page	Product	Page	Product	Page	Product
16	Agitator	4	Hot Air Oven	21	Platelet Incubator
7	Air Curtain	9	Hot Plates	8	Rota Mantle
10,11	Autoclave	16	Homogenizer	6	Rotary Shaker
10	Autoclave Horizontal	19	Humidity Cabinet	18	Seed Germinator
24	Biological Safety Cabinet	19	Humidity Oven	13	Single Wall Water Bath
22	Blood Bank Refrigerator	4	Hybridization Incubator	9	Slide Warming Table
21	Blood Bag Shaker	23	Industrial Oven	6	Slide Viewer Box
22	B O D Incubator	8	Infra Red Rays Cabinet	8	Soxhlet Extraction Apparatus
10	Bunsen Burner	12	Inspisator	16	Stirrers
5	Cabinet Tray Drier	23	Incubator	3	Tensile Testing Machine
15,14	Centrifuge	17	Innoculation Hood (aseptic Hood)	13	Tissue Floatation Bath
15	Centrifuge Refrigerated	6	Kahn Shaker	24	Tissue Culture Rack
14	Constant Temperature Water Bath	12	Laboratory Glassware Dryer	20	Ultra Low Freezers
12	Cryostat Bath	17,24	Laminar Airflow Cabinet	8	U V Cabinet
13	Cylindrical Water Bath	5,7	Muffle Furnace	7	U V Chamber
7	Cyclo Mixer / Vortex Mixer	9	Multi Mantle	23,4	Vacuum Oven
20	Deep Freezer (-20° c To 35° c)	16	Magnetic Stirrer	3	Vertical Laminar Air Flow
18	De-humidifier	12	Oil Bath	7	VRDL Shaker
3	Dry Bath Incubator	18	Orbital Shaking Incubator	12	Viscosity Bath
11	Fermentor	6	Orbital Shaker	9	Water Bath Incubator Shaker
10	Flash Autoclave	13	Paraffin Embedding Bath	14,13	Water Bath
7	Floculator	21	Plasma Freezer	10	Water Still
17	Fume Cup Board	21	Plasma Thawing Bath	6	Wrist Action Shaker
4	Gel Rocker	18	Plant Growth Chamber		
9	Heating Mantle	21	Platelet Agitator		



**VACUUM OVEN Rectangular**

KVOR-1	300 x 300 x 300mm
KVOR-2	350 x 350 x 350mm
KVOR-3	450 x 450 x 450mm
KVOR-4	450 x 450 x 600mm

**VACUUM PUMP**

KVP-1	Single Stage	50	L-P-M
KVP-2	Single Stage	100	L-P-M
KVP-D1	Double Stage	50	L-P-M
KVP-D2	Double Stage	100	L-P-M

**Industrial Oven** is triple walled outer wall made of heavy gauge MS sheet with beautifully painted and second & third wall is made of Galvanised Steel sheet & insulated with mineral wool, temperature range from 50°C to 250°C with an accuracy of +/- 3°C, controlled by Micro processor based Digital Temperature Controller with forced air circulation fan.

**Model No. | Inn. Chamber size L x B x H**

KIDO-1	3' x 3' x 2'
KIDO-2	3' x 3' x 3'
KIDO-3	3' x 4' x 3'
KIDO-4	3' x 5' x 5'
KIDO-5	3' x 5' x 7'
KIDO-6	3' x 6' x 6'
KIDO-7	3' x 6' x 8'
KIDO-8	4' x 6' x 7'
KIDO-9	5' x 6' x 8'

**OPTIONAL**  
Special sizes can be fabricated at an extra cost.  
Double side door can be provided at an extra cost.  
Stainless steel chamber can be fabricated at an extra cost.



**Bacteriological Incubator Bottom Heated**  
Double wall chambers inner made of SS/Alu and outer of Mild Steel sheet duly powder coated with 2 1/2" thick glass wool insulation. Temperature is controlled by thermostat, and working temperature ambient + 5°C to 80°C with an accuracy of +/- 1°C and without thermometer.

**Inner Chamber & Trays Aliu. L x B x H**

Model No.	Chamber Size L x B x H	No. of Trays	Watts	Approx. Lr
KIA-1	300x300x300mm	2	250	28
KIA-2	350x350x350mm	2	250	45
KIA-3	450x450x450mm	2	250	95
KIA-4	450x450x600mm	3	250	125
KIA-5	600x600x600mm	3	500	225
KIA-6	600x600x900mm	3	500	325

**Inner Chamber & Trays S.S.**

KIS-1	300x300x300mm	2	250	28
KIS-2	350x350x350mm	2	250	45
KIS-3	450x450x450mm	2	250	95
KIS-4	450x450x600mm	3	250	125
KIS-5	600x600x600mm	3	500	225
KIS-6	600x600x900mm	3	500	325

**OPTIONAL** Micro processor based Digital Temperature Controller  
Air Circulation Fan

**NB:** Air circulation fan is mandatory for models KIA-4 / KIS-4 and above

**Thermostatic**

**Inner Chamber & Trays Aliu. L x B x H**

Model No.	Chamber Size L x B x H	No. of Trays	Watts	Approx. Lr
KIMA-1	300x300x300mm	2	250	28
KIMA-2	350x350x350mm	2	250	45
KIMA-3	450x450x450mm	2	250	95
KIMA-4	450x450x600mm	3	250	125
KIMA-5	600x600x600mm	3	500	225
KIMA-6	600x600x900mm	3	500	325

**Inner Chamber & Trays S.S.**

KIMS-1	300x300x300mm	2	250	28
KIMS-2	350x350x350mm	2	250	45
KIMS-3	450x450x450mm	2	250	95
KIMS-4	450x450x600mm	3	250	125
KIMS-5	600x600x600mm	3	500	225
KIMS-6	600x600x900mm	3	500	325

**OPTIONAL** Micro processor based Digital Temperature Controller  
Air Circulation Fan

**Bacteriological Incubator Memmert**



**NB:** Outer & inner S.S. 316 can be fabricated.  
Special sizes can be fabricated.  
Air circulation fan is mandatory for models KIMA-4 / KIMS-4 and above



### Blood Bank Refrigerator



It is an eco friendly CFC free refrigerant and specially designed for storing blood bags and other specific medical products like vaccines, cultures, reagents, etc., in fixed temperature of 4° C to 6° C with an accuracy of +/- 1° C. Made of double walled inner chamber stainless steel and outer mild steel duty powder coated.

**Temperature Controller:** Fully Automatic Micro Processor based Digital Temperature Controller cum Indicator

**Refrigeration:** By hermetically sealed compressor unit with capillary controlled balanced system

**Insulation:** PUF

**Illumination:** Internal cabinet lighting is provided with LED, whenever the door is opened

**Door:** Made of toughened vacuum glass with frame

**Storage:** Provided SS trays for storing standard Blood Bags

**Safety:** An audio visual alarm which comes in to operation in case of temperature variation beyond limit, either power failure or any other reason there by protecting the precious samples stored inside.

Model No.	Capacity	Volume	Inn. Chamber WxDxH (mm)	Shelves
KBR-40	60 Blood Bags	135 Ltr	520 x 400 x 800	4
KBR-70	144 Blood Bags	250 Ltr	520 x 490 x 1000	5
KBR-120	244 Blood Bags	375 Ltr	520 x 520 x 1100	6
KBR-144	288 Blood Bags	620 Ltr	520 x 520 x 1200	7

#### OPTIONAL

- Recorder - 7 days Circular chart Recorder, Ink type and Inkless type
- Bull's eye microprocessor controller with RS 232 interface to take printout in regular interval with out printer
- Voltage Stabilizer 1 Kva [For KBR- 40& 70]
- Voltage Stabilizer 3 Kva [For KBR - 120&144]

Battery backup for digital temp. shown for dig display during power failure.

**Note:** Outer body SS 304 quality can be fabricated on extra cost

**NB:** Non use of stabilizer will render the warranty of the equipment invalid

### Dry Bath Dry Block Digester



### Dry Bath Incubator

**Dry Bath** use interchangeable heating block modules for a variety of applications, including restriction digests, denaturing DNA, BUN, melting agar, coagulation studies hybridisation and Hot Start thermocycled reaction. Aluminium block interface provides good conductivity and even temperature to allow rapid heating and thermal control, temperature range is 50°C to 250°C accuracy: +/- 3°C. Opening size suitable for 6 to 25mm diameter test tube as your requirement.

Model No.	Temp. Range	Thermostat Type
KDBD-1	50°C to 250°C	Thermostat Type
KDBD-2	50°C to 250°C	Digital temp. & timer 0-99 minutes Type

### Refrigerated Chamber Bath



**This** is an eco friendly and CFC free refrigerant bath. Double walled construction inner and outer made of 304 SS sheet with PUF insulation to minimize heat loss. Capillary controlled, balanced and hermetically sealed refrigeration is most economical, trouble free and exceptionally quiet performance. Temperature is controlled by Micro processor based Digital Temperature Controller cum indicator (LED) having an accuracy of +/- 30cc. The working chamber consists of 2nos. holes for inserting test tubes as your requirement.

Model No.	Dimension Outer	Working Chamber (Inns. Holes)
KRBH	450 x 450 x 750	75mm dia x 300mm depth

**OPTIONAL:** Automatic Voltage Stabilizer 3KVA

**NB:** Non use of stabilizer will render the warranty of the equipment invalid

### B.O.D Incubator (Cooling Incubator)



**Most** versatile for Biochemical Oxygen Demand determinations. These Cooling Incubators are designed specially for close control of incubation/ storage temperatures. These are used for BOD test, storage of sensitive cultures, vaccines etc; culture of bacteria micro-organism and plant life; serum incubation studies and immunological work etc. Double wall construction, inner made of Alu/SS and outer M.S duty powder coated with adjustable trays. The instrument is having CFC free refrigeration and heating system with powerful Air circulation for creating positive airflow throughout the working chamber. The unit having a temperature range from 5° C to 60° C with an accuracy of +/- 0.5° C. Temperature is controlled by Kemi Miaka Micro Processor Digital Temperature Controller cum Indicator and provided interior lighting (LED) arrangement while door opening time.

#### [A] Inner chamber Alu

Model No.	Volume	Inn Chamber WxDxH (mm)	CAP	No. of shelves
KBOD-3A	90 Ltrs	420 x 400 x 650 mm	3 cft	2
KBOD-6A	150 Ltrs	450 x 400 x 820 mm	6 cft	3
KBOD-10A	275 Ltrs	570 x 510 x 930 mm	10 cft	3
KBOD-12A	350 Ltrs	620 x 570 x 1000 mm	12 cft	3

#### [B] Inner chamber S.S.

Model No.	Volume	Inn. Chamber WxDxH (mm)	CAP	No. of shelves
KBOD-3S	90 Ltrs	420 x 400 x 650 mm	3 cft	2
KBOD-6S	150 Ltrs	450 x 400 x 820 mm	6 cft	3
KBOD-10S	275 Ltrs	570 x 510 x 930 mm	10 cft	3
KBOD-12S	350 Ltrs	620 x 570 x 1000 mm	12 cft	3

#### OPTIONAL

- Chamber illumination with the help of Flu. Lamp
- Sterilization of work area with the help of UV Lamp
- Cyclic Timer 0-24 hours for regulating UV Lamp inside the chamber
- Automatic Voltage Stabilizer 1 KVA [For KBOD- 3 & 6]
- Automatic Voltage Stabilizer 3 KVA [For KBOD - 12 &10]

**Note:** Full Stainless Steel unit can be supplied in all models at on specific order

**NB:** Non use of stabilizer will render the warranty of the equipment invalid.

### Vertical Laminar Air Flow System

**The** Vertical Laminar Airflow is used for the protection of filling/packaging operations of products that are so sensitive for contamination. It is blown vertically from the plenum towards the ground, and is guided within the area to be protected via a system of either flexible PVC curtains or rigid polycarbonate panels. This airflow maintains the area to be protected under a greater pressure than the surrounding room, thus avoiding any cross contamination

#### Construction:

SS/MS as per required sizes can be supplied on specific order.

### Tensile Testing Machine



**Body** made up of heavy gauge mild steel with powder coated. It is commonly used for the test of Glue shear strength, Modulus or Rupture (MOR), and Modulus of Elasticity (MOE) of samples in plywood and textile industry

#### FEATURES

- Load cell capacity: 50KN
- Load indication resolution: 1N
- Cross head speed Range: 1 to 50 mm/minute
- Elongation resolution: 0.1mm
- Automatic stop of predetermined upper and lower limits
- Peak hold facility
- Auto stop feature on sample break
- Load indication selection switch for Kg and N
- Good featured AC variable speed drive for 3 phase induction motor.
- Machine supplied with heavy MS stand



### Hot Air Oven Bottom heated



### Thermostatic

Hot Air Ovens are sturdy double walled units inner chamber made of S.S. and outer made of Mild Steel with Power coating. Gap between the walls filled with glass wool insulation to avoid heat losses. Temperature is controlled by thermostat. Temp. range 50°C to 250°C and Accuracy  $\pm 1^\circ\text{C}$  Air Ventilations are placed on top of both sides to remove hot gases/fumes.

### Inner Chamber & Trays Alu.

Model No.	Chamber Size L x B x H	No. of Trays	Watts	Approx. Lr
KOA-1	300x300x300mm	2	1000	28
KOA-2	350x350x350mm	2	1000	45
KOA-3	450x450x450mm	2	1000	95
KOA-4	450x450x600mm	3	1000	125
KOA-5	600x600x600mm	3	1500	225
KOA-6	600x600x900mm	3	1500	325

### Same as above but the Inner Chamber & Trays

### Stainless Steel (304 grade)

KOS-1	300x300x300mm	2	1000	28
KOS-2	350x350x350mm	2	1000	45
KOS-3	450x450x450mm	2	1000	95
KOS-4	450x450x600mm	3	1000	125
KOS-5	600x600x600mm	3	1500	225
KOS-6	600x600x900mm	3	1500	325

### OPTIONAL

Micro processor based Digital Temperature Controller  
Air Circulation Fan

**NB:** Air circulation fan is mandatory for models KOA-4 / KOS-4 and above

### With three side Tubular Heating Elements

### Inner Chamber & Trays Alu.

Model No.	Chamber Size L x B x H	No. of Trays	Watts	Approx. Lr
KOMA-1	300x300x300mm	2	1000	28
KOMA-2	350x350x350mm	2	1000	45
KOMA-3	450x450x450mm	2	1000	95
KOMA-4	450x450x600mm	3	1000	125
KOMA-5	600x600x600mm	3	1500	225
KOMA-6	600x600x900mm	3	1500	325

### Inner Chamber & Trays S.S.

KOMS-1	300x300x300mm	2	1000	28
KOMS-2	350x350x350mm	2	1000	45
KOMS-3	450x450x450mm	2	1000	95
KOMS-4	450x450x600mm	3	1000	125
KOMS-5	600x600x600mm	3	1500	225
KOMS-6	600x600x900mm	3	1500	325

### OPTIONAL

Micro processor based Digital Temperature Controller  
Air Circulation Fan

**NB:** Air circulation fan is mandatory for models KOMA-4 / KOMS-4 and above

### Hot Air Oven Mammert Type



### Gel Rocker



These GEL Rocker is specifically optimised with the ideal rocking speed and tilt angle for blot washing, gel staining and obtaining applications. Speed: 0-60 Oscill/min fitted with digital timer 0-99 minutes, with controllable speed.

Model No.	Platform size
KGH-1	280 x 280mm

Double walled construction, outer body made of Mild steel duly powder coated and inner chamber made of 304 quality SS sheet, glass wool insulation, temperature range ambient  $+5^\circ\text{C}$  to  $60^\circ\text{C}$ . Temperature is controlled by Micro Processor based Digital Temperature Controller Cum Indicator (LED). Provided with SS tray with suitable supporters to hold rack or flasks on it. The up and down oscillation can be controlled by an electronic speed regulator, maximum 90 stroke per minute. An air circulation fan and one CFL also provided inside the chamber. To create humidity a water bowl can be kept inside, position is provided in the chamber. Front door of the equipment is provided with full view glass door.

Model No.	Int. Dimension	Watts
KH-1	350 x 350 x 350mm	400

### Hybridization Incubator

### Vacuum Oven Cylindrical



**VACUUM OVEN Cylindrical**  
**Commonly** using the temp. range from  $50^\circ\text{C}$  to  $250^\circ\text{C}$ . The inner chamber is made out of SS and outer of MS sheet beautifully powder coated. Glass wool insulation is provided all around the chamber to minimize heat loss due to radiation. The door and its frame is made of heavy gauge mild steel having a toughened glass window to view the samples placed inside. The temperature is controlled and indicated by a Micro processor based Digital Temperature Indicating Controller (LED). Vacuum Control valve with a vacuum gauge is also provided. Maximum Vacuum: 760mm of Hg. Mains: 220/230V/AC.

Model No.	Chamber Size
KVOC-1	300mm x 300mm
KVOC-2	400mm x 600mm
KVOC-3	450mm x 600mm
KVOC-4	500mm x 750mm

### Blood Bag Shaker



### Plasma Thawing Bath



Made of outer MS sheet duly powder coated and inner made of SS sheet. The temp is maintained by Micro Processor based Digital Temperature Controller cum indicator from ambient  $+5^\circ\text{C}$  to  $60^\circ\text{C}$  having an accuracy of  $\pm 0.5^\circ\text{C}$  with audio visual alarm for low & high temp. Mechanism of thawing is by pumping mechanism of high capacity pump and maintenance of temp of water by heater with sealed sensor dipped directly in water. Removable type S.S. tray with partition for holding 12 bags. Foldable lid made of S.S. with two handles and the whole unit is to work on 230V, 50Hz.

Model No.	Inner size WxDxH	Capacity	Capacity of plasma bag
KPTB-1	470 x 290 x 260 mm	40 Ltr	12-15

### Platelet Agitator



Oscillating platform is made up of SS, been oscillated side-to-side with approximate 35.0mm displacement at the end. It is specially designed to maintain donor platelets in an even suspension throughout blood plasma. Platelet Agitator agitates at a fixed speed of 70-80 strokes per minute. Maximum 32 standard platelet bags can be accommodated.

Model No.	No. of Strokes	Capacity
KPA-1	70-80/Min	32 Std platelet bags

### Platelet Incubator cum Agitator



Plasma Freezers are designed for quick freezing and storing of plasma and related blood components at desired low temperature up to  $-35^\circ\text{C}$ . Available in vertical and horizontal models.

**Horizontal:** Provides uniform storage of plasma and related blood component products, preset temperature at  $-35^\circ\text{C}$  with micro controller and circular chart recorder.

### Plasma Freezer



Model No.	Capacity of plasma bags	Inner Size W x D x H	Capacity of plasma bags	Inner Size W x D x H
KPFH-1	130	700x480x600 mm	130	500x425x800 mm
KPFH-2	240	1000x500x600 mm	240	500x580x980 mm

**Vertical:** For storage of plasma bags at  $-35^\circ\text{C}$  with circular chart recorder

### OPTIONAL

- Recorder: 7 days circular chart Recorder - inkless and ink type
- Automatic Voltage Stabilizer 1 KVA

**NB:** NON use of stabilizer will render the warranty of the equipment invalid



### Deep Freezer Horizontal (chest Type)

This is an eco friendly and CFC free refrigerant and constructed of double wall, the exterior is made of M.S Sheet, duty powder coated, interior of SS having PUF insulation to minimize heat loss. Capillary controlled, balanced and hermetically sealed refrigeration is most economical, trouble free and exceptionally quiet performance. Temperature is controlled by Micro Processor based Digital Temperature Controller with single compartment having an accuracy of +/- 3°C.



Upto -20°C

Model No.	Inn. Dimension (W x D x H)	Max. Temp. -20° C	Vol
KDF-1	500mm x 380mm x 600mm	-20° C	115 Ltrs
KDF-2	700mm x 480mm x 600mm	-20° C	200 Ltrs
KDF-3	1000mm x 500mm x 600mm	-20° C	300 Ltrs
KDF-4	1000mm x 600mm x 700mm	-20° C	420 Ltrs

Upto -35°C

KDF-1SP	500mm x 380mm x 600mm	-35° C	115 Ltrs
KDF-2SP	800mm x 380mm x 600mm	-35° C	180 Ltrs
KDF-3SP	1200mm x 400mm x 600mm	-35° C	300 Ltrs

Automatic Voltage Stabilizer 3 Kva

**OPTIONAL** NB: Non use of stabilizer will render the warranty of the equipment invalid

### Deep Freezer Vertical (Upright)

This is an eco friendly and CFC free refrigerant and constructed of double wall, the exterior is made of M.S Sheet, duty powder coated and interior of SS having PUF insulation to minimize heat loss. Capillary controlled, balanced and hermetically sealed refrigeration is most economical, trouble free and exceptionally quiet performance and supplied with four Nos. standard storing trays. Temperature is controlled by Micro Processor based Digital Temperature Controller Cum Indicator having an accuracy of +/- 3°C.

Upto -20°C

Model No.	Inn. Dimension (W x D x H)	Max. Temp. -20° C	Vol
KDFV-1	400 x 425 x 680	-20° C	110 Ltrs
KDFV-2	500 x 425 x 800	-20° C	171 Ltrs
KDFV-3	500 x 580 x 980	-20° C	285 Ltrs
KDFV-4	550 x 640 x 1000	-20° C	425 Ltrs

Upto -35°C

KDFVSP-1	400 x 425 x 680	-35° C	110 Ltrs
KDFVSP-2	500 x 425 x 800	-35° C	171 Ltrs
KDFVSP-3	500 x 580 x 980	-35° C	285 Ltrs

Automatic Voltage Stabilizer 3 Kva

**OPTIONAL** NB: Non use of stabilizer will render the warranty of the equipment invalid

20

### Ultra Low Freezers Horizontal (Chest Type)

Up To -80 °C [in AC Room]

This freezer specially engineered superior insulation and specially designed refrigeration system- double walled with exterior of MS duty powder coated interior of SS having PUF insulation to minimize heat loss. Capillary controlled, hermetically sealed CFC free refrigeration system to ensure most economical / trouble free and exceptionally quiet performance and also provided with castor wheels. Temperature is controlled by PID Micro Processor Based Digital Temperature Controller Cum Indicator [LED] with single compartment upto -80 °C in AC room having an accuracy of +/- 3°C.



Upto -80 °C [in AC room]

Model No.	Inn. Dimension (W x D x H)	Vol
KDFH-U-1	550 x 370 x 680 mm	110 Ltrs
KDFH-U-2	800 x 370 x 680 mm	170 Ltrs
KDFH-U-3	1200 x 370 x 680 mm	285 Ltrs

Same as above but Temperature -40 °C to -70 °C [in AC room]

KDFH-L-1	550 x 370 x 680 mm	110 Ltrs
KDFH-L-2	800 x 370 x 680 mm	170 Ltrs
KDFH-L-3	1200 x 370 x 680 mm	285 Ltrs

Automatic Voltage Stabilizer 3 KVA

**OPTIONAL** NB: Non use of stabilizer will render the warranty of the equipment invalid

Upto -80 °C [in AC room]

This freezer specially engineered superior insulation and specially designed refrigeration system- double walled with exterior of MS with duty powder coated interior of SS having PUF insulation to minimize heat loss. Capillary controlled, hermetically sealed CFC free refrigeration system to ensure most economical trouble free and exceptionally quiet performance. The unit is supplied with four nos standard storing trays with castor wheels. Temperature is controlled by PID Micro Processor Based Digital Temperature Controller [LED] upto -80 °C in AC room having an accuracy of +/- 3°C.

Upto -80 °C [in AC room]

Model No.	Inn. Dimension (W x D x H)	Vol
KDFV-U-1	425 x 400 x 680 mm	110 ltrs
KDFV-U-2	500 x 425 x 845mm	170 ltrs
KDFV-U-3	580 x 500 x 980 mm	285 ltrs

Same as above but Temperature -40 °C to -70 °C [in AC room]

KDFV-L-1	425 x 400 x 680 mm	110 ltrs
KDFV-L-2	500 x 425 x 845mm	170 ltrs
KDFV-L-3	580 x 500 x 980 mm	285 ltrs

Automatic Voltage Stabilizer 3 KVA

**OPTIONAL** NB: Non use of stabilizer will render the warranty of the equipment invalid

### Ultra Low Freezers Vertical (Upright)



### Muffle Furnace Special 1100°C

Rectangular electric furnace with light weight and fast heating system, the body made of thick mild steel sheet duly powder coated with iron angles. Working temperature of 1100°C, controlled by Micro Processor based Digital Temperature Controller Cum Indicator (LED) fitted with thermal fuse and thermocouple with ceramic wool insulation.



Model No.	Chamber size	Watts
KMF-1S	4'x4'x9"	2 KW
KMF-2S	5'x5'x10"	2.5 KW
KMF-3S	6'x6'x9"	3.3 KW
KMF-4S	6'x6'x12"	3.5 KW

The unit is specially designed to meet the requirements of High Temperature the casing is made of M.S. reinforced with iron angles duly painted. Chamber made of Ceramic Zirconium Board and elements are placed Horizontally in the Chamber. Heating is done by Silicon Carbide Rods duly controlled by Micro processor based PID controller with Thyristor-LED. It saves energy upto 30%, with easily replaceable Carbide Rods. These Furnaces have outstanding Temperature reliability and have large surface radiation ratio to enhance thermal efficiency and power consumption. Control panel is fitted with Digital Temperature Indicator Cum Controller separately having Ammeter and Volt Meter etc. Working temperature 1300°C operable in 220 Volts Single Phase AC supply with Therister.

Model No.	Chamber size
KMF-1S-SP	4' x 4' x 9"
KMF-2S-SP	5' x 5' x 10"
KMF-3S-SP	6' x 6' x 9"
KMF-4S-SP	6' x 6' x 12"

**NB:** Special sizes can be fabricated

### Muffle Furnace Programmable 1100°C

Rectangular electric furnace with light weight and fast heating system, the body made of thick mild steel sheet duly powder coated with iron angles. Working temperature is 1100°C, controlled by programmable PID Controller Cum Indicator fitted with thermal fuse and thermocouple with ceramic wool insulation.



Heating element made with KANTHAL A-1

**Features:** PID with fully programmable parameters. There is 20 programs loading facility. Each program has 50 steps. Every step includes Temperature, Rate ( in Centigrade per min or Centigrade per hour), Soak period, Operator call & Event Relay setting. Number of laps for the whole program is also settable. All the programs are stored in non-volatile EEPROM. We can control the following on each program: Auto hold, Manual hold, Programmable operator call hold, Skip step, Auto start with real time, Online alteration, Auto/Man selection, Abort, Repeat, Power fail/Auto restart.

**Soak period:** We can set From 0 minutes to 99 Hrs 59 minutes.

**Storage:** 3000 readings are stored in the controller. Reading can be stored any time intervals. **Alarm:** Programmable alarm limits during ramp & Soak. **Front Panel:** Combo display with 2 sets of 4 LED displays, 16 x 2 alphanumeric backlit LCD display & 8 Nos virtual LED indicators. The keypad is 5 key high quality sealed membrane type. **Real Time Clock & Calendar:** Provided with battery back-up.

Automatic Voltage Stabilizer 3 KVA

**OPTIONAL** NB: Non use of stabilizer will render the warranty of the equipment invalid

Model No.	Chamber size	Watts
KMF-1S-P	4'x4'x9"	2 KW
KMF-2S-P	5'x5'x10"	2.5 KW
KMF-3S-P	6'x6'x9"	3.3 KW
KMF-4S-P	6'x6'x12"	3.5 KW

### High Temperature Muffle Furnace 1300°C



Model No.	Outer Size (W x D x H)	Inner Size (W x D x H)	Rating
KCTD-1	875x650x1150mm	830x550x900mm	2 KW

**NB:** Different types and sizes of industrial driers can be supplied on specific order

5



### Slide Viewer Box



**MS** box dully powder coated with illuminated play glass viewing 300mm long and 100mm wide which operate on 220/230 VAC.

**Model No.** KSVB-1

### Wrist Action Shaker/Griffin Flask Shaker



**Heavy MS** body dully powder coated having two side arms with suitable flask holding clamps, using AC/DC gear motor and shaking speed range 50-250 rpm with variable speed control.

Model No.	No. of flasks	Motor
KWAS-1	4 Flasks upto 500ml	1/20 Hp
KWAS-2	6 Flasks upto 500ml	1/12 Hp
KWAS-3	8 Flasks upto 500ml	1/8 Hp

### Rotary Shaker



Model No.	Platform size	Capacity
KRS-1	300x300mm Additional platform	250ml x 9nos 100ml x 16nos
KRS-2	450x450mm Additional platform	250ml x 16nos 100ml x 36nos
KRS-3	600x600mm Additional platform	250ml x 36nos 100ml x 64nos
KRS-4	900x900mm Additional platform	250ml x 64nos 100ml x 100nos

**OPTIONAL**  
 a. Digital Rpm display from 50to 250Rpm with timer (1/99 min)  
 b. 0-24 hrs weekly cyclic timer  
 c. SS lotus clamps for holding flasks (instead of rubber disk)

### Orbital Shaker



**These** shakers are made of fully stainless steel/MS having Lotus Clamps holding various sizes of flasks and the orbital speed ranging from 50-250 RPM. The unit has built with Micro Processor Controlled RPM and Digital timer - 1 to 99 minutes (Orbit Dia - 25mm)

Model No.	Platform size	Capacity
KORB-1 SS	360 X 360mm	16 Flasks x 250 ml
KORB-1 MS	360 x 360mm	16 flaska x 250 ml

### Kahn Shaker Reciprocating Type



**Reciprocating** action, forward and backward movement, (eccentric 0.5" each side) and controllable speed shaker upto 150 strokes per minute. Tray with lotus clamp or rubber disc supporters can accommodate Erlen Meyer flasks and tray with adjustable roller supporters can accommodate Khan racks, bottle of different sizes, displacement approx. 40mm. Various sizes are available.

Model No.	Platform Capacity	Platform Size (in mm)
KKS-1S	9 flasks of 250 ml	380 x 380
KKS-2S	12 flasks of 250 ml	380 x 500
KKS-3S	16 flasks of 250 ml	500 x 500

### Humidity Cabinet



### Environmental Test Chamber (Stability Test Chamber)

**Double** wall construction, inside of Alu/S and outside of M.S duty powder coated with a front door having glass window to inspect the samples inside the chamber. These chambers are designed for environmental testing of production samples where both temperature and humidity are to be controlled. Temperature can be controlled from 5° C to 60°C with an accuracy of  $\pm 1^{\circ}$  C. Temperature and Humidity controlled by Digital Temperature Controller Cum Indicator-LED [Dual display] from 40% to 90% with sensitivity of  $\pm 1\%$ , supplied without hygrometer. Power supply -220/230 V.

#### Inner Alu:

Model No.	Volume	Inn. Dimension W x D x H	Cft
KHC-1A	90 Ltrs	418 x 380 x 580 mm	3
KHC-2A	150 Ltrs	418 x 440 x 825 mm	6
KHC-3A	275 Ltrs	570 x 505 x 955 mm	10
KHC-4A	350 Ltrs	620 x 570 x 1050 mm	12
<b>Inner SS</b>			
KHC-1SS	90 Ltrs	418 x 380 x 580 mm	3
KHC-2SS	150 Ltrs	418 x 440 x 825 mm	6
KHC-3SS	275 Ltrs	570 x 505 x 955 mm	10
KHC-4SS	350 Ltrs	620 x 570 x 1050 mm	12
KHC-5SP	269 Ltrs	570 x 500 x 1050 mm	11

#### OPTIONAL

- Micro processor controlled programmable Temperature and Humidity controller upto 99% Humidity  $\pm 1-5\%$
- Bulls eye microprocessor PID Temperature and Humidity controller with RS 232 interface to take printout in regular interval with out printer
- Chamber illumination with the help of Fluorescent lamps
- Sterilization of work area with the help of 2 U.V Lamps
- Cyclic Times 0-24 hours for regulating of U.V lamps
- Automatic Voltage Stabilizer 1 KVA [for 3 & 6 cft]
- Automatic Voltage Stabilizer 3 KVA [for 10 & 12 cft]
- Hygrometer (Humidity Indicator). Humidity Range 0 to 100% R.H

**NB:** Non use of stabilizer will render the warranty of the equipment invalid

### Humidity Oven



**Double** walled construction outer body made of MS duty powder coated and inner S.S./Alu with a front door having glass window to inspect the samples inside the chamber. Temp. range having ambient  $+5^{\circ}$  C to  $60^{\circ}$  C with an accuracy of  $\pm 1^{\circ}$  C. Temperature and Humidity controlled by PID Digital Temperature Controller and Humidity controller with RS 232 inter-fase to take print out in regular interval with out printer

#### Inner Alu:

Model No.	Volume	Inn. Dimension W x D x H	Cft
KHO-1A	90 Ltrs	418 x 380 x 580 mm	3
KHO-2A	150 Ltrs	418 x 440 x 825 mm	6
KHO-3A	275 Ltrs	570 x 505 x 955 mm	10
KHO-4A	350 Ltrs	620 x 570 x 1050 mm	12
<b>Inner SS</b>			
KHO-1SS	90 Ltrs	418 x 380 x 580 mm	3
KHO-2SS	150 Ltrs	418 x 440 x 825 mm	6
KHO-3SS	275 Ltrs	570 x 505 x 955 mm	10
KHO-4SS	350 Ltrs	620 x 570 x 1050 mm	12

#### OPTIONAL

- Micro processor controlled PID programmable Temperature and Humidity controller upto 99% Humidity  $\pm 1-5\%$
- Bulls eye microprocessor PID Temperature and Humidity controller with RS 232 inter-fase to take print out in regular interval with out printer
- Chamber illumination with the help of Fluorescent lamps
- Sterilization of work area with the help of 2 U.V Lamps
- Cyclic Timer 0-24 hours for regulating of U.V lamps/Flu. lamps
- Automatic Voltage Stabilizer 1 KVA [for 3 & 6 cft]
- Automatic Voltage Stabilizer 3 Kva [for 10 & 12 cft]
- Hygrometer (Humidity Indicator). Humidity Range 0 to 100% R.H



### De-Humidifier (Environmental Controller)



The refrigerated unit is suitable for de-humidification of packaging cabinets in food, pharma and chemical industry. The room or cabin should be well closed and occupants should be minimum, the achievable humidity approx 40%.

Model No.	Capacity	Work Space Volume	No. of Occupants
KDH-1	1 Ton	70[m <sup>3</sup> ] in room	5
KDH-2	1.5ton	100[m <sup>3</sup> ]in room	7

#### OPTIONAL

Automatic Voltage Stabilizer 3 KVA

**NB:** Non use of stabilizer will render the warranty of the equipment invalid

**Seed Germinators** are useful for seed testing, biological studies, forestry research work, Plant Pathology & Veterinary Science etc. They are suitable for the simulation of temperature and relative humidity values above freezing point. Chamber illumination with one fluorescent and one ultra violet tubes along with cyclic timer gives the user the flexibility to simulate daylight conditions inside the chamber. Double walled with inside of Stainless Steel and outside of Mild Steel duty powder coated. The instrument having CFC free refrigeration with hermetically sealed compressor, controlled by Bulls-eye Micro-processor humidity & temp controller.

- Humidity range 40% to 90% RH with an accuracy of + -3%
- Menu driven 10 program memory
- User friendly Microprocessor Design Operation (PID with LCD Display)
- Safety thermostat to prevent over heating.
- Audio Visual alarm warnings of Temp. & RH variation and low water level.
- Capacitance type humidity sensor for direct display of humidity in% RH.
- Electronics interface for keeping hard data of Temp., Humidity, Time & Date.
- Non volatile memory for data storage of up to 2500 records.
- RS 232 Inter-face
- High voltage safety cut off for unit protection

Model No.	Capacity	No. of trays	Inner Dimension (W x D x H)
KSG-1	170 Ltr	6	500 x 425 x 800mm
KSG-2	285 Ltr	8	500 x 580 x 980mm

#### OPTIONAL

- Chamber illumination with the help of 2 Fluor Lamps
- Sterilisation of work area with 2 UV Lamps (Manually operate)
- Cyclic timer 0-24 hours for regulating cyclic illumination
- Recorder for recording temp. & humidity (Circular) (ink / inkless)

Automatic Voltage Stabilizer for 2KVA  
Automatic Voltage Stabilizer for 3 KVA

18

### Plant Growth Chamber



These are designed for study the effects of different environment parameters such as humidity micro-organisms, plants and tissues etc. Apart from various customized industrial and research application, have a variety of usage in R & D laboratories and research studies a over the globe. These plant growth chambers have a variety of usage in tissue culture applications, enzyme reaction studies, growth observation studies, fermentation analysis and various other general and specialized applications in various laboratories.

**Construction:** Inside made of Stainless steel & outside made of mild steel duty powder coated fitted with cooling, heating and lighting arrangement. Temperature range 0°C to 60°C +/- 1°C. -Temperature can be obtained from 15°C to 50°C +/- 1°C when all lights from two sides and top are 'On'. Temperature is controlled by PID electronic Digital Temperature Controller. Cum indicator to set two temperature for day and night. Above Growth Chamber is complete with Humidity control from 40% to 90%RH. Light intensity can be adjusted by controller according to requirement and humidity shall be controlled by controller.

Model No.	Inner Dimension	Capacity
KPGC-1	500W x 550D x 1200H mm	300 Ltr
KPGC-2	600W x 600D x 1200H mm	430 Ltr
KPGC-3	1200W x 600D x 1200H mm	860 Ltr

- UV Lamp
- Recorder for recording temp. & humidity (Circular) **NB:** Non use of stabilizer will render the warranty of the equipment invalid
- Recorder for recording temp. & humidity (Strip Chart)
- Automatic Voltage Stabilizer for 2KVA/3 KVA

#### OPTIONAL

**Specially** designed to have a combined advantage of closely controlled incubation/storage temperature with orbital shaking necessary for many laboratory uses like tissue cultures, fermentation studies, enzyme reactions, controlled purification, ageing tests, growth studies etc.. Double wall construction, the exterior is made of MS duty powder coated and interior of SS. The door having glass window (vacuum) makes it possible to inspect specimen without disturbing the temperature and also fitted with a digital timer (1-99 minutes) for shaker. Forced duty air circulator creates positive airflow through the incubator.

Model No.	Temp	Shaking speed	Platform size	Capacity
KOSI-1	5°C-60°C	50-250RPM	360x360mm	16 flasksx250ml

#### Orbital Shaking Incubator without Compressor

Model No.	Ambient	Capacity
KOSI-2	+5°C-60°C	360x360mm

#### OPTIONAL

- Additional platform for each: [100 ml x 25 Nos., 500ml x 9 Nos., 1000 x 4 Nos.]
- Chamber illumination with fluorescent tube (2 Nos.)
- Sterilization with ultra violet lamp (2 Nos.) (Manually operate)
- 0-24 hrs Cyclic Timer for illumination
- Automatic Voltage Stabilizer 2KVA

### Orbital Shaking Incubator



### UV Chamber



**Double** walled, outer body made of MS powder coated, inner made of UV stabilized polycarbonate sheet. Unit equipped with 4 Nos. UV lamps on 4 sides of the equipment (1 1/2 length each) & illumination with the help of fluorescent lamp (1 No.) inside the chamber, when the door closes UV lamps will automatically switch ON and fluorescent lamp will switch OFF and vice versa. Unit will have castor wheels for easy handling. UV chamber is backed with all modern and sophisticated features for maintaining the sterility of sterilized instruments in dental clinics.

Model No.	L x D x H mm
KUC-1	450 x 450 x 900

**NB:** Stainless steel body can fabricated

### V.D.R.L. Shaker



**Made of** MS body duty powder coated with a platform size of 300mm x 300mm for handling small flasks or reactor trays. The shaker platform rotates in a horizontal plane and allows a wide variety of rotary and mixing application.

**Model No.** KVDRL

Equipped with 0-15 minutes Timer upto 180 RPM approx.

**NB:** Digital timer (1-99) minutes

### Cyclo Mixer/ vortex Mixer



**This** vortex mixer is used for thorough mixing of precipitates in test tubes, small bottles or flasks. Touch working & speed regulator switch also provided to control the speed. Suitable to work on 220 VAC.

Model No.	RPM
KCM-1	1200

### Floculator Jar Testing Apparatus



**Continuous** duty geared motor drive with built in speed control. S.S. stirring shafts with adjustable height S.S. propeller and tube lights for illumination available in various models.

Model No.	Motor	RPM	No. of Multi Spindle
KFLO-1	1/20 HP	0-100	4 Nos.
KFLO-2	1/20 HP	0-100	6 Nos.
KFLO-3	1/8 HP	0-300	4 Nos.
KFLO-4	1/8 HP	0-300	6 Nos.

**Produces** a high-speed air barrier, dividing areas into two independent temperature zones. Levels of interior air conditioning/ heating are maintained, increasing comfort and saving energy.

Model No.	Door width
KAC-1	2 ft
KAC-2	3 ft
KAC-3	4 ft
KAC-4	5 ft
KAC-5	6 ft

### Air Curtain (Air Doors)



### Muffle Furnace 900°C



**Rectangular** electric furnace with light weight and fast heating system, the body made of thick mild steel sheet duty powder coated with iron angles. Working temperature of 900°C, controlled by Micro processor based Digital Temperature Controller cum Indicator (LED) and thermocouple with ceramic wool insulation.

Model No.	Chamber size	Watts
KMF-1	4' x 4' x 9"	2 KW
KMF-2	5' x 5' x 10"	2.5 KW
KMF-3	6' x 6' x 9"	3.3 KW
KMF-4	6' x 6' x 12"	3.5 KW

7



### Rota Mantle

#### Heating Mantle with Magnetic Stirrer

Used for variable speed with heating by mantle and temperature is controlled by Energy Regulator.



Model No.	Watts	Capacity
KRM-3	125W	250ml
KRM-4	250W	500ml
KRM-5	300W	1000ml
KRM-6	350W	2000ml

Heating Mantles are arranged in a row. Housing is made with MS sheet duly powder coated, supplied with two nos MS stand and one adjustable rod equipped with individual Energy Regulator and Pilot Lamp to work on 220-230 VAC.

Model No.	Capacity
KSEA-1	50/100mlx3
KSEA-1a	250mlx3
KSEA-1b	500mlx3
KSEA-1c	1000mlx3
KSEA-2	50/100mlx6
KSEA-2a	250mlx6
KSEA-2b	500mlx6
KSEA-2c	1000mlx6

### Soxhlet Extraction Apparatus



### Infra Red Rays Cabinet

This is used for melting rubbers in the rubber industries. Supplied complete with IRR Bulbs. Separate switch for each bulb.



Model No.	Watts	Bulbs
KIRR-1	3000W	12
KIRR-2	4500W	18
KIRR-3	6000W	24

Made of MS sheet duly powder coated, provided with inspection hole, useful for viewing TLC plate under UV light.

**Outer Space** (L x B x H)  
325mm x 250mm x 275mm

**Model No.**  
KUVIC-1  
KUVIC-2  
One U.V lamp (short wave) with one fluorescent lamp  
Two U.V lamps (short 256 & long 356 wave) with one fluorescent lamp

### U.V. Cabinet



### Fume Cupboard Portable Type



### [Fume Exhaust Hood] made with Full FRP

Provide a clean, well-ventilated, safe work area to protect personnel from chemical fumes. Portable fume hoods feature one-piece, moulded FRP construction. A clear Poly carbonate foldable door can be maintained in the open, closed, or intermediate position. Closed panel leaves a gap at the bottom for continuous air flow, bench top model.

**Model No.** KFH-P  
**Working Area** 2 L x 2 B

### Fume Cupboard



These are designed to exhaust toxic and other harmful vapours for protecting laboratory personnel equipments. The main body of the Fume Cupboard is made of good quality Plywood with water & chemical proof Poly Urethane coated and inside of the cup board is made from FRP lining, which is acid or alkali resistant, fitted with a sliding door made of UV stabilised polycarbonate sheet, moves vertically up and down with counter balanced weight system. Fluorescent light is provided inside the chamber for easy working. One FRP zinc of small size, water tap and gas cock are also provided inside the chamber. Working top of the Fume Cupboard is of Granite or acid proof tiles. A major blower exhaust system (Blower and blower cover is made with FRP) fitted on the top of the working area, which generates negative pressure within the hood extracting the contaminated air from the work area and expelling into the atmosphere, and preventing the fume escaping into the room. For this purpose there is provided a provision for connecting 4 dia PVC pipe on the top of the instrument. Beneath the working area, fitted 3 drawers on one side and a closed storage area with a provision for locking system on the other side of the unit.

Model No.	Working Table L x B	Other Size LxBxH
KFH-1	3 x 2	38 1/2" X 26 1/2" X 72"
KFH-2	4 x 2	50 1/2" X 26 1/2" X 72"
KFH-3	5 x 2	62 1/2" X 26 1/2" X 72"
KFH-4	6 x 2	74 1/2" X 26 1/2" X 72"

### Fume cupboard without Bottom Part (Table Top)

Model No.	Working Table L x B	Other Size LxBxH
KFH-1T	3 x 2	38 1/2" X 26 1/2" X 48"
KFH-2T	4 x 2	50 1/2" X 26 1/2" X 48"
KFH-3T	5 x 2	62 1/2" X 26 1/2" X 48"
KFH-4T	6 x 2	74 1/2" X 26 1/2" X 48"

- OPTIONAL**
- MS fabricated unit with auto painted (instead of marine plywood) can be supplied on specific order.
  - Fabrication with special dimensions can be supplied on specific order.
  - Stainless Steel fabricated unit can be fabricated at an extra cost.

### Inoculation Hood Aseptic hood



Made of M.S Sheet duly powder coated, equipped with exhaust system, provided with front plexy glass with one fluorescent lamp and one U.V germicidal lamp.

**Model No.** KIH-1  
**Dimension** L x B x H  
750 x 600 x 600 mm

### Laminar Air Flow Cabinet Horizontal



Provide double filtered clean air through Pre Filters & HEPA Filters (CLASS 100) basically constructed out of good quality plywood with exterior Epoxy water & chemical proof Poly Urethane coated and the air flow is coming in horizontal way (1/5 HP motor - 1440 Rpm). Work table is made of S.S. and side panels are made of U.V stabilised polycarbonate sheet. Static Inclined Pressure Manometer and cork for gas U.V Lamp. Fluorescent light are also provided.

Air flow and Filtration-Laminar Flow principle involves double filtration of air. Atmospheric air is drawn through pre-filter and is made to pass through highly effective HEPA (High Efficiency particulate Air - deep pleat) filter having efficiency rating as high as 99.99% with cold DOP and 99.97% with hot DOP, thus retaining all air-borne particles of size 0.3 micron and larger. Double filtered air blows in laminar flow to the worktable at designated velocity of 90 l/min +/-20% Noise level Less than 65 db at work area, and Vibration - 0.00005 cm of worktable.

Model No.	Size of HEPA Filter	Outer dimension W x D x H
KLF-1SS	2 x 2	28" x 40" x 60 1/2"
KLF-2SS	3 x 2	40" x 40" x 60 1/2"
KLF-3SS	4 x 2	52" x 40" x 60 1/2"
KLF-4SS	6 x 2	76" x 40" x 60 1/2"

### OPTIONAL

- Laminar Air Flow Cabinet with MS sheet fabrication duly powder coated can be supplied on request.
- Laminar Air Flow Cabinet with SS body can be supplied on request
- Dwyer magnetic gauge can be fitted



### Magnetic stirrer



Without Hot Plate		Capacity
<b>Model No.</b>	Min Magnetic stirrer with electronic speed control	1 Ltrs
KMS-350	Magnetic stirrer with electronic speed control	2 Ltrs
KMS-450	Two in one magnetic stirrer with electronic speed control	4 Ltrs
KMS-550	Magnetic stirrer with electronic speed control	5 Ltrs
KMS-600		

The body fabricated with MS sheet, duly powder coated having SS top housing series of Magnetic Stirrers are most compact models. These are smooth running apparatus utilizing the rotating magnetic field from a balanced permanent magnet (Stirring speed - 1200RPM (approx) to induce variable stirring action in close or open non magnetic containers. Stirring is accomplished by a small Teflon coated magnetic paddle to be placed in the container.

### With Hot Plate [Temperature 300°C approx]

KMS-400	With hot plate and temperature is controlled by Energy Regulator	1 Ltrs
KMS-500	With hot plate and temperature is controlled by Energy Regulator	2 Ltrs
KMS-650	With hot plate and temperature is controlled by Energy Regulator	5 Ltrs

Available on 1/20 HP, 1/12 H.P. & 1/8 H.P. Motors. It is suitable for general laboratory application.



### Stirrer

#### Light Duty Stirrer, 1/20 HP AC/DC Motor (Bush)

Model No.	Capacity
KLS-101A	6 to 8 Ltrs
KLS-101B	6 to 8 Ltrs
KLS-101C	6 to 8 Ltrs

#### Light Duty Stirrer, 1/20 HP AC/DC Motor (Chuck)

KLS-102 A	6 to 8 Ltrs
KLS-102 B	6 to 8 Ltrs

#### Medium Duty Stirrer: 1/12 HP AC/DC Motor (Chuck)

KLS-104 1A	10 to 15 Ltrs
KLS-104 1B	10 to 15 Ltrs

#### Medium Duty Stirrer: 1/8 HP AC/DC Motor (Chuck)

KLS-104 2A	15 to 20 Ltrs
KLS-104 2B	15 to 20 Ltrs

#### Heavy Duty Stirrers: (Hollow Spindle Belt Driven)

KLS-105 4B	60 to 85 Ltrs
------------	---------------

#### Heavy Duty Stirrers: Direct Drive, Self Centering Chuck

KLS-107 4B	60 to 85 Ltrs
------------	---------------

### OPTIONAL

DIGITAL RPM, Meter & Timer

### Gearred Stirrer

Stirrer with gear, driven by AC/DC motor of 120HP. Available in two speed ratings 340RPM & 720RPM

Model No.	Motor HP	RPM	Coupling	Speed Regulator
KGES-1	1/20	340/720	Chuck	Electronic
KGES-2	1/20	340/720	Chuck	Auto Variac

### Agitator Heavy Duty Beam Mounted



### 3 Phase Connection

These stirrers having a stirring capacity ranging from more than 1200 lbs to 5000 lbs and supplied without sand. Shaft is made of Stainless Steel. A standard motor fitted to a pulley with a belt which can be driven at two different speed of 1440/960RPM. Unit supplied without main switch and starter.

Model No.	Motor	Capacity
KLS-110	1 HP AC Motor	1200 to 1500 Ltrs
KIS-110A	1 HP AC Motor (Single Phase)	1200 to 1500 Ltrs
KIS-112	1.5 HP AC Motor	1500 to 2000 Ltrs
KIS-113	2 HP Motor	2000 to 3000 Ltrs
KIS-115	3 HP Motor	3000 to 5000 Ltrs

NB: Fitting charge for the above extra at actual cost.

**Useful** for homogenizing of tissues. The self-centering chuck holds SS Shaft up, 10 mm fitted with Teflon grinding pestle. 50 ml glass homogenizing cup with rod supplied as standard.

### Homogenizer

Model No.	Coupling
KHG-1	Bush
KHH-1	Chuck

NB: Spare homogenizing cup with rod, 15ml and 25ml can be supplied on request.

### Water Bath Incubator Shaker



### Metabolic Shaking Incubator

Double wall, inside made of S.S. and outside of M.S. duly powder coated with a Temperature range ambient + 5°C to 80°C. Temp is controlled by Micro Processor based Digital Temperature Controller Cum Indicator (LED) with an accuracy of  $\pm 0.5^\circ\text{C}$  and shaking speed of oscillating tray is 40 to 140 RPM. Supplied with S.S. tray having Lotus Clamps. Driven by geared motor and supplied without thermometer. Shaker stroke the both sides of 35mm.

Model no.	Size L x B x h	Volume	Capacity
KWBS-1	280x300x175mm	15 Ltr	9 Flasks x 100 ml
KWBS-2	360x330x170mm	21 Ltr	12 Flasks x 100 ml

### OPTIONAL

50 ml x 12 Flasks, 150ml x 9 Flasks, 250ml x Flasks, 500 ml x 4 Flasks, 1000 ml x 2 Flasks & 2000 ml x 1 Flask holding trays can be supplied.

### Hot plate Rectangular With Energy Regulator



Heavy MS Body duly powder coated with SS or MS Top, fitted with Energy Regulator and Rotary Switch supplied complete with cord and plug to work on 220/230V AC (Temperature - 250°C-300°C approx.)

Model No.	Size	Watts
KHPE-1SS	250mmx300mm	2000
KHPE-2SS	250mmx400mm	2000
KHPE-3SS	300mmx450mm	2000
KHPE-4SS	450mmx600mm	3000
Model No.	Size	Watts
KHPE-1MS	250mmx300mm	2000
KHPE-2MS	250mmx400mm	2000
KHPE-3MS	300mmx450mm	2000
KHPE-4MS	450mmx600mm	3000

### Hot Plate Round SS Top



Body constructed out of Mild Steel Sheet, duly powder coated, supplied with cord and plug to work on 220/230VAC (Temperature range 250°C-300°C) 1250 watts.

Model No.	Description	Top
KHPR-1	8" Dia round hot plate without energy regulator	CJ
KHPR-2	8" Dia round hot plate with energy regulator	CJ
KHPR-1S	8" Dia round hot plate with energy regulator	S.S
KHPR-2S	11" Dia round hot plate with energy regulator	S.S

### Slide Warming Table



### With Thermostat

Body made of Mild Steel sheet duly powder coated to work on 220/230VAC

### Top Sheet Aluminium

Model no.	Inn. Dimension V x D x H	Watts
KSWTA-1	450 x 300 x 150mm	1500
KSWTA-2	600 x 450 x 150mm	2000

### Top Sheet SS

KSWTC-1	450 x 300 x 150mm	1500
KSWTC-2	600 x 450 x 150mm	2000

### Heating Mantle



The Heating Mantle are rolled and anchored securely in glass sleeve reinforced and insulated by glass wool to work on 220/230 V/AC. Temperature is controlled by Energy Regulator (Temperature range 100°C approx.)

Model No.	Rating	Capacity
KHM-3	125W	250 ml
KHM-4	250 W	500 ml
KHM-5	300 W	1000 ml
KHM-6	350 W	2000 ml
KHM-7	500 W	5000 ml
KHM-8	1000 W	10000 ml
KHM-9	1500 W	20000 ml
KHM-10	3000 W	50000 ml

### Multi Mantle

The Heating Mantles are rolled and anchored securely in glass sleeve, reinforced and insulated by glass wool to work on 220/230 V/AC, but with 3 or 6 mantles in one unit and the temperature is controlled by Energy Regulator.

Model No.	Capacity
KMM-1	250 ml x 3
KMM-2	250 ml x 6
KMM-3	500 ml x 3
KMM-4	500 ml x 6
KMM-5	1000 ml x 3
KMM-6	1000 ml x 6



### Flash Autoclave (Dental)



It is table top front loading autoclave, double walled unit, outer M.S. powder coated inner 304 grade S.S. All joints are argon welded. Door is made up of heavy gauge S.S. sheet and using high quality saloon gasket used with ISI marked immersion heater 1.5 KW Ir 230/240 V.

#### Features:

- Fully automatic microprocessor based control
- Digital timer both for wet and dry cycle
- Alarm after the total command is completed
- Cyclic timer 10 to 15 minutes
- Temperature 121°C-134°C
- Unit is supplied with 2 Nos. S.S. trays with tray stand

Model No.	Dia x Depth	Volume
KFAC-1	230 x 410 mm	17 Ltr

Single wall electrically operated constructed with Stainless sheets 304 grade

Model No.	Dia x Height	Body	KW	Capacity
KAUC-PS	300x300mm	S.S.	1.5	20 Ltr

### Autoclave Portable



Triple walled unit, made of S.S. 304 grade all joints are argon welded. Mounted horizontal on a sturdy, heavy mild steel tubular stand duly powder coated. Pressure is adjustable from 10-20 PSI. Fitted with pressure gauge, safety valve and steam release valve. The units fitted with MULTIPLE OPERATING VALVE to carry out all functions of sterilization cycle at one point i.e. Steam to chamber, Exhaust, Vacuum/Drying. Fitted with a Digital Temperature Indicator to indicate inner temperature, Automatic Pressure Control device and Automatic Low Water Level cut-off Device. Lid is made of S.S. plate provided with radial locking system.

Model No.	Dia x Depth	Capacity	Load
KAUC-HC1	250x450MM	22 Ltrs	2.0KW
KAUC-HC2	300x500mm	35 Ltrs	3.0KW
KAUC-HC3	350x550mm	50 Ltrs	4.0KW
KAUC-HC4	400x600mm	75 Ltrs	6.0KW
KAUC-HC5	450x600mm	95 Ltrs	6.0KW
KAUC-HC6	550x750mm	175 Ltrs	8.0KW
KAUC-HC7	500x1100mm	215 Ltrs	9.0KW

NB: Special sizes can be fabricated on request

### Autoclave Horizontal cylindrical



### Water Still (Table Top) Barnstead Type



The complete unit of barnstead type water still is made from stainless steel along with complete argon welding. The high quality kettle type immersion heater is provided with our highly efficient Manesty Type Water Still. We also indicate water level and drain facility in this barnstead type water still for efficient working.

Heavy gauge top mounted S.S. flange, Accurate and pyrogen free distil water.

High quality Kettle type immersion Heaters.

Opening type condenser for periodic cleaning by opening flange. Water level cut off and Drain facility.

Model No.	Capacity	Load
KWSB-1	2/3 litres per hour	2 KW
KWSB-2	4/5 litres per hour	3 KW
KWSB-3	8/9 litres per hour	8 KW
KWSB-4	15/16 litres per hour	10 KW
KWSB-5	19/20 litres per hour	14 KW
KWSB-6	25/26 litres per hour	18 KW



### Water Still (Wall Mounting) Manesty Type

It is electrically operated to obtain Pyrogen free distilled water, made of complete SS (single wall) fitted with ISI marked heaters to ensure trouble free continuous service. Wall mounting clamp is provided with the unit but without rubber tube, supplied with cord and plug to work on 220/230V.

Model No.	Watts	Output
KWS-1	2000	2 Ltrs/Hr
KWS-2	3000	4 Ltrs/Hr
KWS-3	4000	6 Ltrs/Hr
KWS-4	6000	8 Ltrs/Hr
KWS-5	9000	10 Ltrs/Hr

#### OPTIONAL

- Water level cut off system
- For installation of water still, extra charge on request

### Bunsen Burner



Electrically operated with S.S. body and glass wool insulation fitted with 300W heating element (Temperature upto 700°C approx.)

#### Available in two models:

- KBB-1 Without Energy Regulator
- KBB-2 With Energy Regulator

### Centrifuge

### Centrifuge



**(A) Clinical Centrifuge**

Model No.	Description	CAP	RPM
C-4A	Clinical Centrifuge, angle rotor head	4 x 15 ml	4500
C-6A	Clinical Centrifuge, angle rotor head	6 x 15 ml	4300
C-8a	Clinical Centrifuge, angle rotor head	8 x 15 ml	4200

#### (B) Medico Centrifuge

Model No.	Description	CAP	RPM
C-4S	Medico Centrifuge Swing out head	4 x 15 ml	3600
C-6S	Medico Centrifuge Swing out head	6 x 15 ml	3400

#### (C) Compact Type Laboratory Centrifuge (Mini Type)

Model No.	Description	CAP	RPM
C-6	Angle Rotor with electronic speed regulator	6 x 15 ml	5500
C-6D	Angle Rotor with Digital RPM & Digital Timer (0-99 minutes)	6 x 15 ml	5500

Low priced units meeting the majority of the small capacity centrifuging requirements of medical practitioners, pathological laboratories and Hospitals for routine centrifuging tests. The units are fitted with resiliently mounted motor for vibration free performance having built in 5 step speed regulator. Available with Swing out and Angle Rotor Heads.

#### General Purpose Centrifuge

These compact type of centrifuges are ideal for routine application in medical and industrial laboratories, available in three models with choice of Rotor Heads:

Model No.	Description
C-8A	With step less Electronic Speed Regulator With Digital Timer (0-99 minutes) under Feather Touch System and step less Electronic Speed Regulator
C-8C	Digital speed regulator with RPM & Digital Timer (0-99 minutes) under Feather Touch System
C-8R	Refrigerated centrifuge upto 5000 rpm with digital display & timer (0-99 minutes) under Feather Touch System temperature range: 4° C to 20° C



#### Inter Changeable Rotor Heads for C-8A, C-8B, C-8C & C-8R for the above mentioned centrifuges

AC-1	Swing out head	5000 RPM	8 x 15 ml
AC-2	Angle rotor head	5500 RPM	8 x 15 ml
AC-3	Swing out head	4500 RPM	4 x 50 ml
AC-4	Angle rotor head	5500 RPM	4 x 50 ml
AC-5	Angle rotor head	4800 RPM	12 x 15 ml
AC-6	Swing out head	4500 RPM	12 x 15 ml
AC-7	Swing out head	4200 RPM	16 x 15 ml

### Refrigerated Centrifuge Brush Type

The KH-SRC-1 is housed in a very rigid metal frame duly powder coated, the chamber made up of AISI 304 SS of corrosion resistance, and branded refrigeration unit having front panel where controls are mounted to meet global standards. The equipment is incorporated with a CFC free eco friendly refrigerating system, to maintain consistency of the Temp. Range 4° C to 20° C inside the test chamber.

Special features include lid interlock, 0-99 minutes Digital Timer, dynamic brake and protective fuses. The refrigeration is by means of a hermetically sealed compressor. The Temp is controlled by Micro Processor Controller Cum Indicator. The units will work either in Automatic mode or Manual mode.



Model No.	RPM
KH-SRC-1	upto 20,000 - Approx (without heads)

Model No.	Head	RPM
KH-1	6 x 50 ml	14000
KH-2	8 x 25 ml	14000
KH-3	12 x 15 ml	14000
KH-4	6 x 25 ml	15000
KH-5	8 x 15 ml	15000
KH-6	24 x 1.5 ml	16000

#### OPTIONAL

Automatic Voltage Stabilizer 1 Kva

NB: Non use of stabilizer will render the warranty of the equipment invalid



**Digital** read out control panel, rugged and rigidly built motor, inner chamber made out Mild Steel sheet and outer body made of MS duly powder coated finish to meet global standards. Speed control, (RPM setting) and Timer (1-99 minutes) are controlled under Feather Touch System.

**Model No. RPM**

KHSC-1 Up to 20,000 - Approx (Without Heads)  
KHSC-2 Up to 10,000 - Approx (Without Heads)

**Rotor Angle Heads for KHSC-1 & KHSC-2**

Made out of Extruded Aluminum. Complete with Polycarbonate tubes and individual top covers.

Model No.	Head	for KHSC-1	for KHSC-2
KH-1	6 x 50 ml	14000 rpm	Up to 10,000 rpm
KH-2	8 x 25 ml	14000 rpm	-50-
KH-3	12 x 15 ml	14000 rpm	-50-
KH-4	6 x 25 ml	15000 rpm	-50-
KH-5	8 x 15 ml	15000 rpm	-50-
KH-6	24 x 1.5 ml	16000 rpm	-50-

**Hi Speed Centrifuge**  
Without Cooling  
Brush Type



**Micro Centrifuge**  
Brush Type



**Micro Centrifuge**  
Refrigerated

**These** Centrifuges are ideal for growing routine application to biochemical and clinical labs. This unit have digital rpm indicator and 0-99 minutes digital timer with feather touch switches, maximum rpm is 13000 with load approx.

**It** is an eco friendly CFC free refrigerated micro centrifuge specially designed for growing routine application in biochemical and clinical labs. This unit have digital rpm indicator and 0-99 minutes digital timer with feather touch switches maximum rpm is 13000 with load approximate.

Model No.	Head
KMC-1	Angle rotor head 1.5/2 ml x 24

Model No.	Head
KMCR-1	Angle rotor head 1.5/2 ml x 24

**Constant Temperature Water Bath**



(High Precision Water Bath)

**Double** wall Inner made of stainless steel, outer chamber made of M.S. duly powder coated. Gap between the two walls filled with glass wool to maintain the temperature. Temperature is controlled by Micro processor based Digital temperature controller Cum Indicator (LED) controls temperature from ambient +5°C to 80°C with an accuracy of +/-0.5°C and without thermometer. To get uniform temperature in the water bath, a speed controllable stirrer is fitted and toughened glass window is provided in front of the unit for the visibility of samples.

**OPTIONAL**

Circulation Pump (instead of stirrer) can be fitted at an extra cost

Model No.	Inn. Dimension (W x D x H)	Volume
KCTB-1	350mm x 250mm x 200mm	18 Ltrs
KCTB-2	400mm x 300mm x 250mm	32 Ltrs
KCTB-3	450mm x 350mm x 300mm	50 Ltrs

**Water Bath**  
Serological

**THERMOSTATIC**

**Double** walled construction, outer made of MS duly powder coated and inner chamber with Top Lid made of SS. The gap between the walls insulated with glass wool and supplied without thermometer. Fitted with thermostat and working temperature from ambient +5°C to 80°C having an accuracy of +/-1°C



Model No.	Inner Dimension	Capacity	Watts
KWB-150	250 x 175 x 150mm (Suitable for 1 racks)	7 Ltr	750 W
KWB-160	350 x 250 x 125mm (Suitable for 2 racks)	11 Ltr	1500 W
KWB-170	300 x 250 x 175mm (Suitable for 3 racks)	14 Ltr	1500 W
KWB-180	330 x 300 x 175mm (Suitable for 4 racks)	18 Ltr	2000 W
KWB-190	455 x 300 x 175mm (Suitable for 6 racks)	25 Ltr	2000 W
KWB-200	605 x 300 x 175mm (Suitable for 8 racks)	33 Ltr	2000 W
KWB-200A	250 x 400 x 300mm (Suitable for 8 racks)	31 Ltr	2000 W
KWB-200B	350 x 460 x 285mm (Suitable for 8 racks)	45 Ltr	2000 W

**OPTIONAL**

- a) Micro processor based Digital Temperature Controller Cum Indicator (LED) (instead of Thermostat)
- b) Stirrer with speed regulator
- c) Pyramid lid

**NB:** Stirrer is mandatory for models KWB-190 and above

**Fermentor**  
Mechanical Stirred  
Stainless Steel



**This** fermentor is widely used in microbiology, pharma, DNA proteins, Cell Culture, Bio Fertilizer, Vaccine, Bio Pesticide, Bio Fuels or customer application and requirement. It's an ideal instrument for exact fermenting experimentation. It can be applied to the selection of culture medium component and dosage, optimising of fermenting technology parameter and test of fermentation techniques of bacteria seeds. Because the experiment result approaches that of the production scale, it is quite easy to scale up the fermentation process through the large scale experiment. This type fermentor is generally applied to various fermenting process.

**Vessel Material:** S.S. 304 stainless steel

**Driver:** mechanical stirrer from top with 300rpm

**Sterilization:** in-situ sterilized with steam

**Stead Generator:** Suitable to Fermentor Capacity/Steam Generator

**Air Compressor**

The compressor shall be suitable to work on 230VAC single phase. The compressor is to be run by suitable motor provided with starter.

Model No.	KF-5	KF-10	KF-15	KF-25	KF-50	KF-100	KF-200	KF-300
Capacity	5Ltrs	10Ltrs	15Ltrs	25Ltrs	50Ltrs	100Ltrs	200Ltrs	300Ltrs

**Autoclave**  
Vertical



**OPTIONAL**

- a) Digital Temperature controller cum indicator (instead of Energy Regulator)
- b) Digital Timer
- c) Auto Pressure cut off system
- d) Auto Vacuum Breaker
- e) Auto Purging & Exhaust (Soloid Valve)
- f) Water level glass indicator

**With Radial Locking System**

**Dry** type vertical triple walled construction, all the three walls are made of thick high grade stainless steel sheet of SS-304 grade. The lid is made of stainless steel lid with **radial locking system** and foot paddle lifting device with silicon gasket, provided with built-in safety valve, pressure gauge, pressure release valve and water level indicator. The pressure is adjustable from 5 psi with automatic pressure control switch, controlled with microprocessor based digital controller with inner supplied with stainless steel basket.

**Autoclave**  
Triple Walled  
Vertical



Model No.	Dis x Height	Rating	Volume
KAUT-S1	250 x 450 mm	1.5 KW	22 Ltr
KAUT-S2	300 x 500 mm	2.0 KW	35 Ltr
KAUT-S3	350 x 550 mm	3.0 KW	53 Ltr
KAUT-S4	450 x 600 mm	4.0 KW	90 Ltr
KAUT-S5	550 x 750 mm	6.0 KW	175 Ltr

Model No.	Dis x Height	Rating	Volume
KAUC-S1	250 x 450mm	1.5 KW	22 Ltr
KAUC-S2	300 x 500 mm	2.0 KW	35 Ltr
KAUC-S3	350 x 550 mm	3.0 KW	53 Ltr
KAUC-S4	450 x 600 mm	4.0 KW	90 Ltr
KAUC-S5	550 x 750 mm	6.0 KW	175 Ltr

**OPTIONAL**

- Lid with base/le knobs can be supplied (instead of radial locking system) on request.
- a. Auto Pressure cut off system
- b. Auto Vacuum Breaker
- c. Auto Purging & Exhaust (Soloid Valve)

**NB:** Special size can be fabricated on request

**Double** wall construction with inner S.S. 304, all these sheets are argon welded & outer chamber made of high quality S.S. 304/M.S. sheet duly powder coated. Electrically heated by means of I.S.I. quality immersion heaters with working pressure 15 PSI. Hydraulically dye grassed Lid from S.S. Plate with, easy pedal lifting device, having pressure gauge, two Nos. safety valve, quick release coupling and handle with heater cover stand. Water level arrangement cut off buzzer system and S.S. perforated basket supplied along with unit on free of cost.

**Inner S.S. & Outer M.S.**

Model No.	Dis x Height	Rating	Volume
KAUC-A1	250 x 450mm	1.5 KW	22 Ltr
KAUC-A2	300 x 500mm	2.0 KW	35 Ltr
KAUC-A3	350 X 550mm	3.0 KW	53 Ltr
KAUC-A4	450 x 600mm	4.0 KW	90 Ltr
KAUC-A5	550 x 750mm	6.0 KW	175 Ltr

**Inner & Outer S.S.**

Model No.	Dis x Height	Rating	Volume
KAUC-S1	250 x 450mm	1.5 KW	22 Ltr
KAUC-S2	300 x 500 mm	2.0 KW	35 Ltr
KAUC-S3	350 x 550 mm	3.0 KW	53 Ltr
KAUC-S4	450 x 600 mm	4.0 KW	90 Ltr
KAUC-S5	550 x 750 mm	6.0 KW	175 Ltr



### Laboratory Glassware Dryer



It is used for drying laboratory glassware quickly and safely. By providing continuous warm air circulation through 12/24 hollow drying pegs with large or small bores with dust free fillers labware is never too hot to handle. A time proportional, high/low heat controlled with an automatic thermostat safety cut-off.

Model No.	Capacity
KLGD-1	with 24 drying pegs
KLGD-2	with 48 drying pegs

### Cryostat Bath (Refrigerated Water Bath)



Double walled construction outer body made of MS, duly powder coated and inner chamber made of 304 quality S.S. sheet with PU/F insulated and the temp. range from 0°C to 50°C. The Temperature is controlled by Micro Processor based Digital Temperature Controller cum indicator, with inbuilt time delay for compressor ON. Fitted with pump for circulation. A drain valve is provided in the bottom. Refrigeration is obtained by hermetically sealed compressor with CPC free refrigerant.

Model No.	Inn. Dimension (W x D x H)	Volume	Rating
KUCB-1	200 x 200 x 250mm	8 Ltr	0.75 kw
KUCB-2	250 x 250 x 250mm	15 Ltr	1 kw
KUCB-3	300 x 300 x 250mm	25 Ltr	1.5 kw

#### OPTIONAL

Automatic Voltage Stabilizer for 3 KVA  
NB: Non use of stabilizer will render the warranty of the equipment invalid

### Oil Bath



Double walled construction, inner made of SS sheet outer body made of mild steel beautifully powder coated with glass wool insulation. The temperature is controlled by Thermostat having a temperature range from 50°C to 250°C with an accuracy of  $\pm 2^\circ\text{C}$  and without thermometer.

#### Oil Bath Round (Thermostatic)

Model No.	Inner Dimension	Watts	Capacity
KOB-1	200 mm	1500	2 Ltrs
KOB-2	250 mm	1500	5 Ltrs
KOB-3	300 mm	2000	10 Ltrs

#### Oil Bath Rectangular (Thermostatic)

KOBR-1	200 x 200 x 170mm	1500	2 Ltrs
KOBR-2	250 x 250 x 170mm	1500	5 Ltrs
KOBR-3	300 x 300 x 170mm	2000	10 Ltrs

Micro Processor based Digital Temperature Controller Cum Indicator (LED)  
Geared AC motor with stirring shaft

#### OPTIONAL

#### Thermostatic

Outer body Constructed with wood with PU coating & inner jacket made of copper sheet, epoxy coated and filled with ceramic wool, the inner chamber can accommodate 100 tube of media at a time. Provision for water inlet, outlet and overflow are also equipped with the unit. Temperature is controlled by thermostat to work on 220V AC supply.

#### Inspisator



Model No.	Inner Dimension
KINP-1	510mm x 320mm x 170mm

OPTIONAL Digital Temperature Controller Cum Indicator (LED)

#### Kinematic

Viscosity Bath, having the control panel which consists of mains & temperature indicator, stirrer regulator, mains switch, illumination switch and others. It is used to maintain the correct constant temperature for estimating Kinematic viscosity of oil and petroleum products in this type of bath various viscometers may be fixed as an internal part of the bath.

Constructor: Outer: M.S. inner chamber S.S. with viewing window panel with toughened glass Temperature Range Ambient to 90°C with an accuracy  $\pm 0.50^\circ\text{C}$ , controlled with microprocessor based digital temperature controller and lightning attachments. Available in different size & accommodation without viscometer tube. Bath opening 254 x 200 mm with cover having 8 openings of 50 mm in diameter to hold 6 viscometers with six base/tilt holders.

### Viscosity Bath

#### Model No.

KVSB

6 Nos. of viscosity tube

#### Liquid capacity

22 Ltrs

### Water Bath Ring Type



### Tissue Floatation Bath



Double wall, inside made of Alu; and outer made of M.S. Sheet with duly Powder coated. Temperature is controlled from ambient  $+5^\circ\text{C}$  to  $80^\circ\text{C}$  by Thermostat and without thermometer.

#### With THERMOSTATIC

KTB-1	200mm x 90mm
KTB-2	250mm x 120mm

### Cylindrical Water Bath Single Wall



Stainless Steel single walled with concentric rings of size 6", 5", 4" & 3". I.S.I. quality immersion type heater, suitable to work on 220V/AC.

Model No.	Inn. Dim	Capacity	Watts
KCWB-1	200mm	2 Ltr	1500 W
KCWB-2	250mm	5 Ltr	1500 W
KCWB-3	300mm	10 Ltr	2000 W

OPTIONAL Energy Regulator can be fitted

#### OPTIONAL

Micro processor based Digital Temperature Controller Cum Indicator (LED) (instead of Thermostat)

### Cylindrical Water Bath



#### THERMOSTATIC

Double walled construction inner made of SS and outer made of MS duly powder coated. The gap between the walls filled with glass wool insulation and the temperature is controlled by thermostat from ambient  $+5^\circ\text{C}$  to  $80^\circ\text{C}$  having an accuracy of  $\pm 1^\circ\text{C}$  and without thermometer.

Model No.	Inn. Dim	Capacity	Watts
KCWB1-1	200mm	2 Ltr	1500 W
KCWB1-2	250mm	5 Ltr	1500 W
KCWB1-3	300mm	10 Ltr	2000 W

### Paraffin Embedding Bath



#### THERMOSTATIC

Double walled, inner made of SS 304 quality sheet and outer body made of MS duly powder coated. Temperature is controlled by thermostat from ambient  $+5^\circ\text{C}$  to  $80^\circ\text{C}$  with an accuracy of  $\pm 1^\circ\text{C}$ . The bath is insulated by 25mm glass wool on 5 sides and 6 holes are provided to accommodate SS plots having approx. 63mm dia x 65mm depth.

Model No.	Inner Dimension	Watts
KPWB-1	375 x 300 x 150mm	2000